

The All-New i10



Discover Hyundai's Stylish New City Car.

In life, it's the small things that make a big difference. Like the All-New Hyundai i10. With its fresh and expressive design and gigantic selection of cutting-edge technology - it's a clever companion that gives you the style and flexibility you need to make that difference.









The All-New Hyundai i10.

The Best Of All Worlds
Discover Why at Hyundai.ie

All flowing lines and muscular contrasts, the All-New i10's dynamic new look catches the eye in an instant. Featuring a lower roof and wider body, its lively design is like nothing else in the class. Inspired by the shape of human muscles clothed in athletic sportswear, the clean, smoothly muscled main body has been shaped to provide maximum inner space. And in the front, the dynamic headlamps and sculpted bumper underscore the bold stance to make a powerfully modern statement.







Discover precision roominess.

Inside the stylish new cabin, precise patterns, fresh textures and the latest multi-media technology welcome you with a clean and modern look. Inspired by the sharp technical graphics of athletic gear, soft surfaces and sharp lines abound inside the All-New i10. The circular air-vents visually extend the dashboard into the door trim for a wider, more spacious feeling.





Discover class-leading connectivity.

The All-New i10 offers you the most comprehensive connectivity in its class. The new 8" touch-screen mirrors the contents of your smartphone thanks to Apple CarPlay™ and Android Auto™*.



Charge your smartphone the easy way. The wireless charging tray conveniently located in the centre console lets you easily charge a compatible Qi-enabled smartphone without the use of cables. USB slots are also on board.

*Available in the Deluxe Plus model only.

Perfect for small spaces and big moments.

City streets can get a bit crowded sometimes. So when it comes to navigating narrow intersections and squeezing into tight parking spaces, you'll love this clever city car's refreshing manoeuvrability. Measuring just 3.67 metres long and 1.68 metres wide, the All-New i10 combines a compact exterior with a roomy interior. So no matter if you're parallel parking in traffic or packing loads of luggage for a weekend get-away, the All-New i10 gives you plenty of cargo space and flexibility to live your life in a big way.





Discover clever details for more convenience.



Super storage

From the open compartment above the glove box to larger storage bins in the doors – the All-New i10 comes with plenty of practical and convenient storage spaces to fit your busy life.



Versatile load space

One of the biggest in the segment, the 252-litre boot is also very adaptable. The two-stage luggage board maximises space in the lower position, the upper position creates a level loading area for long items. And the one-hand folding split rear seats drop down quickly for 1050 litres of cargo space.



Rear view camera

Reversing made easy. The rear view camera* system gives you an unobstructed look behind your i10 while in reverse gear.

*Available in the Deluxe Plus model only.





Discover the pleasure of performance.

The All-New Hyundai i10 offers performance like no other with a multi-point fuel injection petrol engine. This is a 1.0-litre 3-cylinder engine with 67 PS and 96 Nm torque.

Discover drivetrain technology.



Manual Transmission

The smooth-shifting 5-speed manual transmission is designed for fast, precise gearshifts.



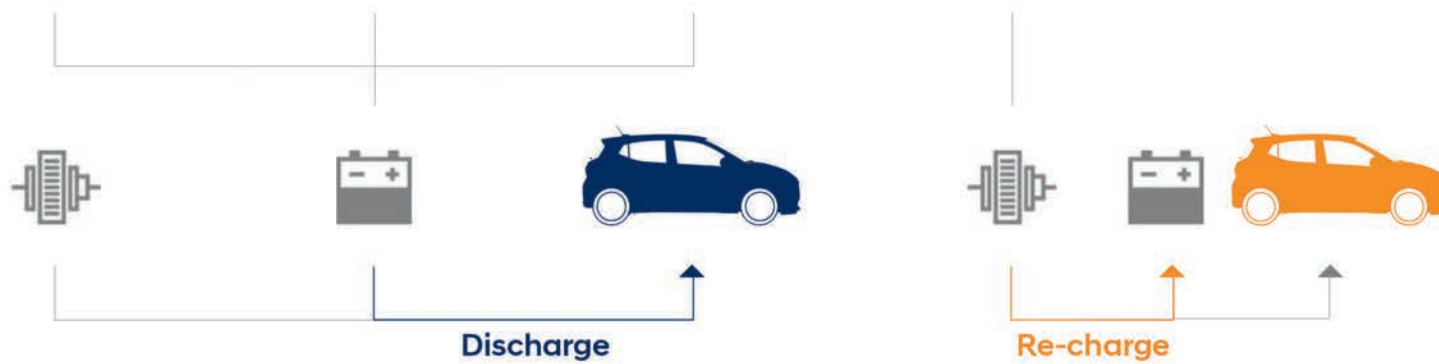
Automated Manual Transmission

The five-gear automated manual transmission (AMT) combines easy and relaxed driving like an automatic transmission with higher efficiency thanks to its lighter weight and reduced friction compared to a traditional automatic transmission.

Speed



Energyflow



Energy Regeneration System

More energy for better fuel efficiency. The All-New Hyundai i10 is equipped with an intelligent Energy Regeneration System (ERS), which captures the kinetic energy created by forward motion and uses it to power your car. As soon as you take your foot off the accelerator and coast in gear,

the system transforms kinetic energy into electricity and stores it in the battery. When accelerating, ERS then uses this electricity to power the on-board electrical systems, easing the load on the motor and increasing fuel efficiency.

Discover technology for safety and peace of mind.

The All-New i10 offers one of the most comprehensive active safety technology packages in its class, which includes Hyundai SmartSense – our cutting-edge Advanced Driver Assistance Systems – built to provide you with more safety and peace of mind. E-call is also on board as standard equipment. This feature automatically calls emergency services if you're in an accident and the airbags deploy. You can also push the SOS button for emergency assistance 24/7, 365 days a year.







Hyundai SmartSense



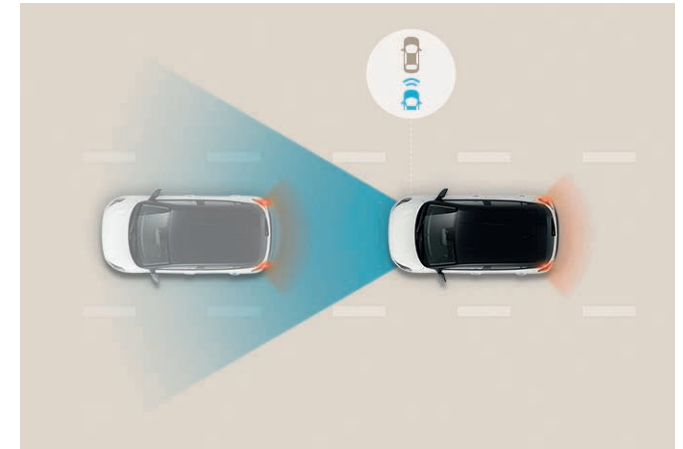
Lane Keeping Assist (LKA)

The Lane Keeping Assist (LKA) uses the front multi-function camera to monitor the lines of the road. In case of an unintended lane departure, it warns you and can apply counter steering torque to guide the car back to the lane.



Driver Attention Warning (DAW)

When a pattern of fatigue or distraction is identified, the system gets your attention with an alert and pop-up message suggesting a break.

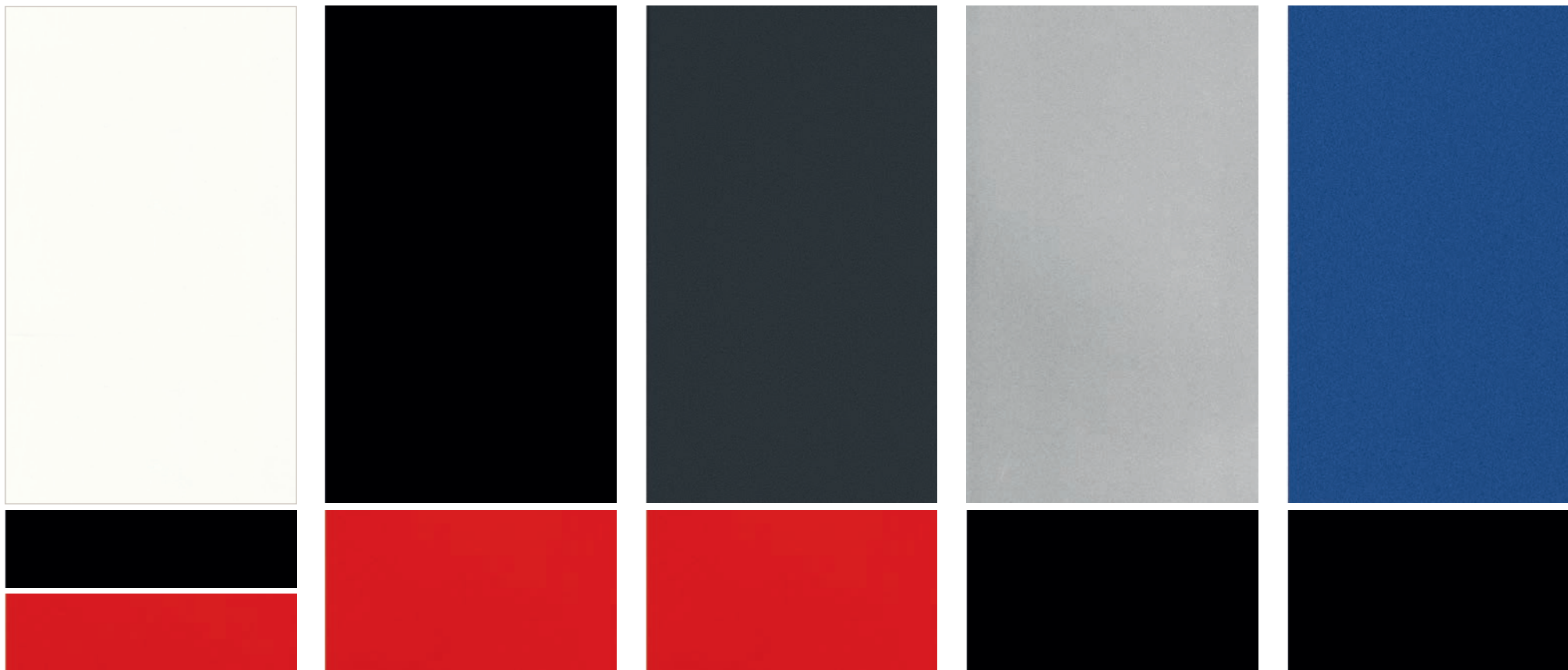


Forward Collision-Avoidance Assist (FCA)

Sensing the road ahead with the multi-function camera, FCA warns you and then automatically brakes when it detects sudden braking by a car ahead. Includes pedestrian detection.

Personalise your perfect version.

With 10 exterior colours and a two-tone roof available in black or red to choose from – you can personalise your own distinctive look with 22 colour combinations.



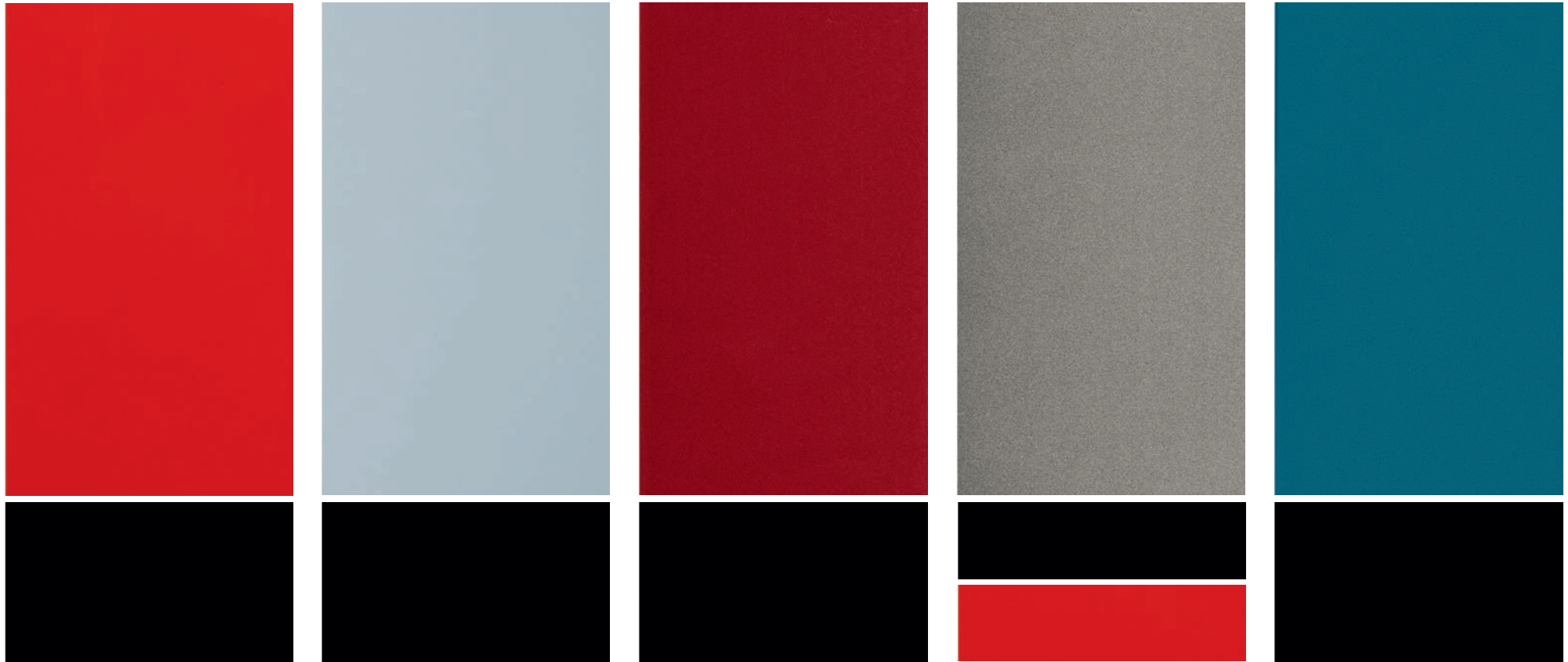
Polar White body colour is available as a two-tone version with the roof in Phantom Black or Tomato Red.

Phantom Black body colour is available as a two-tone version with the roof in Tomato Red.

Star Dust body colour is available as a two-tone version with the roof in Tomato Red.

Sleek Silver body colour is available as a two-tone version with the roof in Phantom Black.

Champion Blue body colour is available as a two-tone version with the roof in Phantom Black.



Tomato Red body colour is available as a two-tone version with the roof in Phantom Black.

Slate Blue body colour is available as a two-tone version with the roof in Phantom Black.

Dragon Red body colour is available as a two-tone version with the roof in Phantom Black.

Brass body colour is available as a two-tone version with the roof in Phantom Black or Tomato Red.

Aqua Turquoise body colour is available as a two-tone version with the roof in Phantom Black.

Find your favourite.

Choose from two different interior colour combinations to personalize your perfect interior.

Dashboard Colours

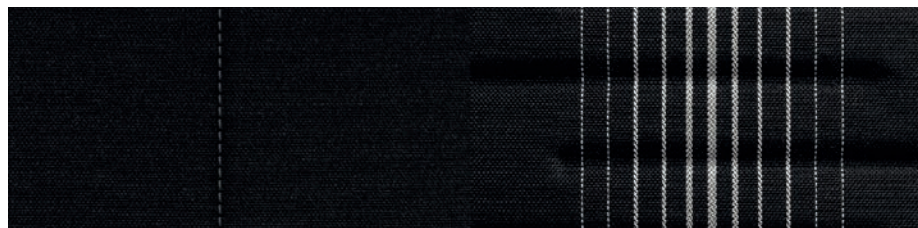


Obsidian Black (White Stripes)

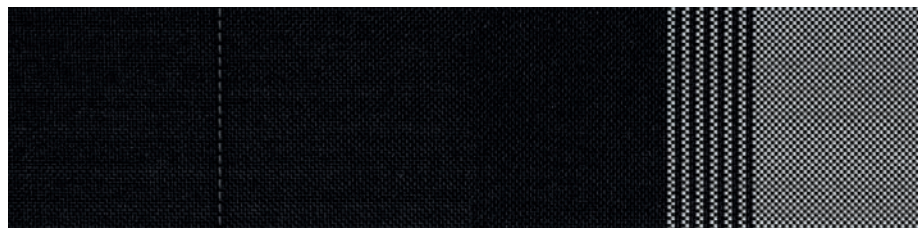


Obsidian Black

Seat Colours



Obsidian Black White Stripes (Standard GLS)



Obsidian Black (Standard GL)

Specifications

Type	1.0 MPI
Motor Type	3-cylinder MPI
Max. Power (kW)	49
Max. Power (PS)	67
Max. Torque (Nm)	96
Transmission	5 MT / 5 AMT
	5 Seats (5 MT / 5 AMT)
Max. Speed (km/h)	156 / 156
0 to 100 km/h acceleration (sec)	14.6 / 17.3
Fuel consumption combined NEDC 2.0 (l/100 km)	4.5 / 4.5
Fuel consumption combined WLTP (l/100 km)	5.3 / 5.6
CO ₂ target NEDC 2.0 (g/km)	104 / 104
MCO ₂ target WLTP (g/km)	120 / 127
Brakes (mm)	
Front (Diameter)	252
Rear (Diameter)	234
Suspension	
Front	McPherson Strut
Rear	Coupled Torsion Beam Axle
Wheel type	
Tyres	
14-inch steel wheels	175/65R14
15-inch alloy wheels	185/55R15



15" Alloy Wheel

Unit : mm



Overall Width 1,680
Wheel Tread 1,467



Overall Length 3,670
Wheel Base 2,425

Overall Height

1,480



Wheel Tread 1,478

Equipment Specification

Classic

The i10 Classic comes with the following specifications:

Exterior

- 14" Steel Wheels with Wheel Covers
- Bumpers - Body Coloured
- Door Mirrors - Black
- Exterior Door Handles - Black
- Rear Spoiler with Integrated LED Brake Light

Interior

- Leather Wrapped Steering Wheel and Gear Knob

Seating

- Driver's Seat Height Adjustment (Manual)
- Head Restraints -Vertical Adjustment (Front)
- Rear Seats - Split Folding (60/40)
- Seat Trim - Cloth

Ventilation & Visibility

- Headlight - Halogen
- Daytime Running Lights
- Fog Light - Rear
- Interior Light - Front
- Rear Windscreen Wiper
- Windscreen and Front Door Tinted

Convenience

- Auto Light Control
- Cruise Control
- Manual Speed Limit Assist (MSLA)
- Door Pockets - Front & Rear
- Electric Power Steering
- Electric Windows - Front
- Glove Compartment
- Power Outlet in Front Console
- Steering Column - Tilt Adjustable
- Tyre - Temporary Mobility Kit (TMK)

Technology & Entertainment

- Radio+ RDS
- Bluetooth® Connectivity
- Speakers - 2 Front
- Steering Wheel Audio Controls
- Trip Computer

Safety & Security

- Airbag - Front Passenger De-Activation Switch
- Airbags - Front, Front Side & Curtain Airbags
- Anti-lock Brake System (ABS)
- Central Locking - Remote Control
- Childproof Rear Door Locks
- Driver Attention Warning
- E-Call
- Electronic Stability Control (ESC)
- Emergency Stop Signal (HMSL)
- Forward Collision-Avoidance Assist (FCA)
- Hill-start Assist Control (HAC)
- Immobiliser
- ISOfix Child Seat Anchorage Points - Rear
- Lane Keep Assist (LKA)
- Tyre Pressure Monitoring System (TPMS)

Deluxe

The i10 Deluxe includes all of the Classic specifications plus the following:

Exterior

- 15" Alloy Wheels
- Door Mirrors - Body Coloured
- Exterior Door Handles - Body Coloured

Interior

- Interior Door Handles - Metal Paint Effect

Ventilation & Visibility

- Air Conditioning - Manual
- Daytime Running Lights - LED
- Fog Lights - Front
- Integrated Indicator Lights - Door Mirrors
- Interior Light - Luggage Compartment
- Privacy Glass - Rear Windows and Tailgate
- Position Lights - LED

Convenience

- Door Mirrors - Electric Adjustment and Heated
- Electric Windows - Anti-Trap Mechanism (Driver)
- Electric Windows - Rear
- Front Console Storage with Driver's Arm Rest
- Sun Visors - with Driver and Passenger Vanity Mirrors

Technology & Entertainment

- Speakers - 2 Rear

Safety & Security

- Alarm
- Luggage Hook and Net

Deluxe Plus

The i10 Deluxe Plus includes all of the Deluxe specifications plus the following:

Technology & Entertainment

- 8" Touchscreen Display
- Phone Connection - Android Auto™
- Phone Connection - Apple CarPlay™

Safety & Security

- Wireless Charger
- Rear View Camera - (with Dynamic Parking Guidelines)

Dealer stamp



*The Hyundai 5-Year Unlimited Mileage Warranty applies only to Hyundai vehicles that have been originally sold by an authorized Hyundai dealer to an end-customer, as set out in the terms and conditions of the warranty booklet. Contact your official Hyundai dealer for further information.